

GENERAL NOTES: SERIES 5540
IMPACT RESISTANT, VINYL
CASEMENT WINDOW

1) THIS PRODUCT HAS BEEN DESIGNED & TESTED TO COMPLY WITH THE REQUIREMENTS OF THE FLORIDA BUILDING CODE.

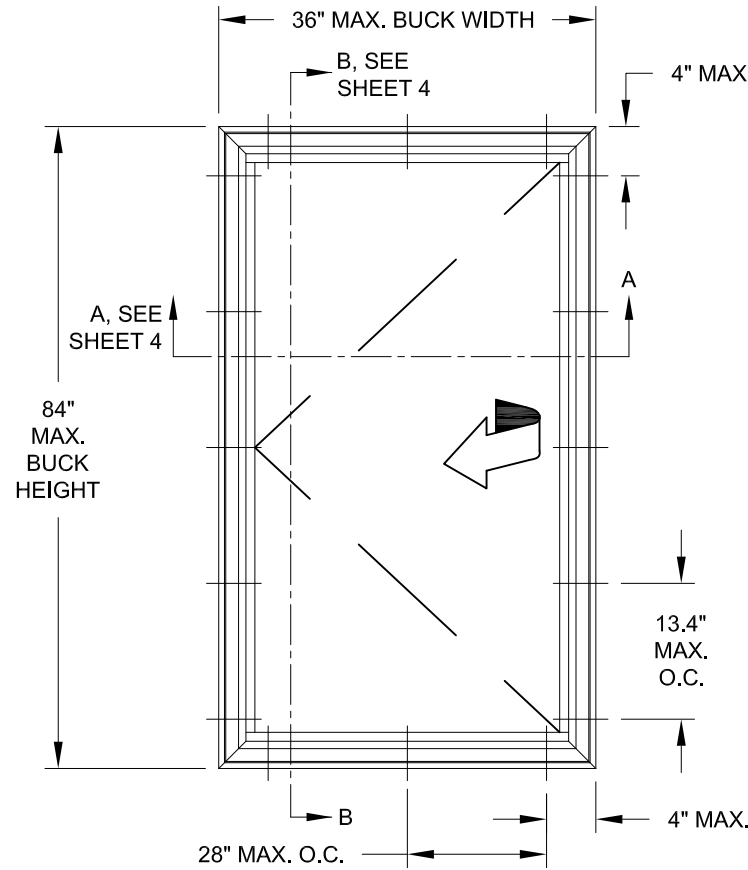
2) ALL WOOD BUCKS LESS THAN 1-1/2" THICK ARE TO BE CONSIDERED 1X INSTALLATIONS. 1X WOOD BUCKS ARE OPTIONAL IF UNIT IS INSTALLED DIRECTLY TO SUBSTRATE. WOOD BUCKS DEPICTED AS 2X ARE 1-1/2" THICK OR GREATER. 1X AND 2X BUCKS (WHEN USED) SHALL BE DESIGNED TO PROPERLY TRANSFER LOADS TO THE STRUCTURE. WOOD BUCK DESIGN AND INSTALLATION IS THE RESPONSIBILITY OF THE ENGINEER, (EOR) OR ARCHITECT OF RECORD, (AOR).

3) ANCHOR EMBEDMENT TO BASE MATERIAL SHALL BE BEYOND WALL DRESSING OR STUCCO. USE ANCHORS OF SUFFICIENT EMBEDMENT. INSTALLATION ANCHORS SHOULD BE SEALED. OVERALL SEALING/FLASHING STRATEGY FOR WATER RESISTANCE OF INSTALLATION SHALL BE DONE BY OTHERS AND IS BEYOND THE SCOPE OF THESE INSTRUCTIONS.

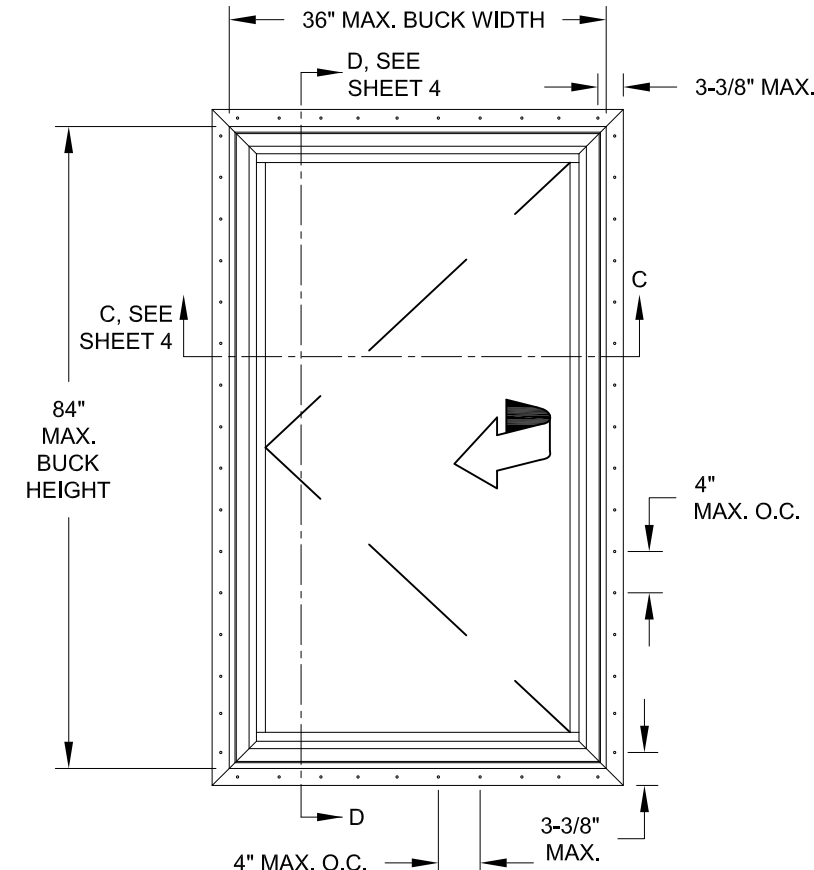
4) MAX. 1/4" SHIMS ARE REQUIRED AT EACH ANCHOR LOCATION WHERE THE PRODUCT IS NOT FLUSH TO THE SUBSTRATE. USE SHIMS CAPABLE OF TRANSFERRING APPLIED LOADS. WOOD BUCKS, BY OTHERS, MUST BE SUFFICIENTLY ANCHORED TO RESIST LOADS IMPOSED ON THEM BY THE WINDOW.

5) THE ANCHORAGE METHODS SHOWN HAVE BEEN DESIGNED TO RESIST THE WINDLOADS CORRESPONDING TO THE REQUIRED DESIGN PRESSURE. THE 33-1/3% STRESS INCREASE HAS NOT BEEN USED IN THE DESIGN OF THIS PRODUCT. THE 1.6 LOAD DURATION FACTOR WAS USED FOR THE EVALUATION OF ANCHORS INTO WOOD. ANCHORS THAT COME INTO CONTACT WITH OTHER DISSIMILAR MATERIALS SHALL MEET THE REQUIREMENTS OF THE FLORIDA BUILDING CODE FOR CORROSION RESISTANCE.

DESIGN PRESSURE RATING	IMPACT RATING
SEE TABLE 1	NOT RATED FOR IMPACT RESISTANCE



ELEVATION FOR TYP. EQUAL LEG/BOX & FLANGE FRAME



ELEVATION FOR TYP. FIN & J-CHANNEL FRAME

TABLE 1:

Window Buck Size		Reinf. Level	Design Pressure		Certification (CAR) Number
Width	Height		(+) psf	(-) psf	
36"	71.593"	Standard	50	50	190-299, 1059
34.365"	75"	Standard	50	50	190-299, 1059
36"	84"	HD	65	70	190-501, 1060

Title: VINYL CASEMENT WINDOW, LMI		Drawn By: J ROSOWSKI	
Description: GENERAL NOTES & ELEVATIONS		Date: 12/13/14	
Revision: MINOR EDITS - JR - 6/16/21			
Series/Model: CA-5540	Scale: NTS	Sheet: 1 OF 4	Drawing No. FPA-5540CA.0 Rev: B

PGT

1070 TECHNOLOGY DRIVE
 N. VENICE, FL 34275
 (941) 480-1600

COPYRIGHT © 2021
 PGT INDUSTRIES, INC., LIMITED LICENSE
 TO MAKE COPIES FOR PERMITTING.
 REGISTRATION #29296

ANTHONY LYNN MILLER
 LICENSE
 No. 58705
 6/23/21
 STATE OF FLORIDA
 PROFESSIONAL ENGINEER
 A. LYNN MILLER, P.E.
 P.E.# 58705

TABLE 2: ANCHORS INSTALLED THROUGH FRAME

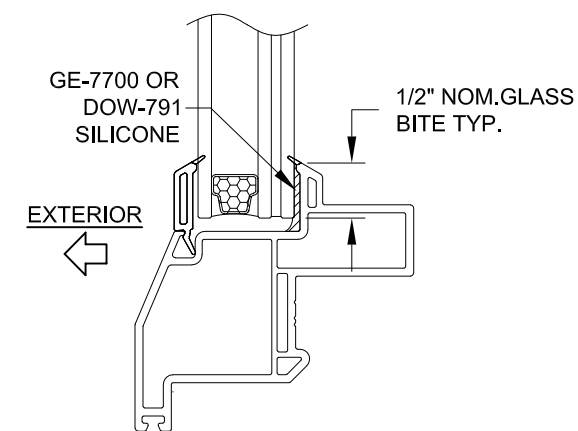
Anchor	Substrate	Min. Edge Distance	Min. Embedment
#10 SMS (steel, 18-8 S.S. or 410 S.S.) Max. DP of 50.0 psf	P.T. Southern Pine (SG=0.55)	7/16"	1-3/8"
	Steel, A36	3/8"	0.050"
	Steel Stud, A653 Gr. 33	3/8"	0.0346" (20 Ga.)
	Aluminum, 6063-T5	3/8"	0.0713" (14 Ga.)
#12 SMS (steel, 18-8 S.S. or 410 S.S.)	P.T. Southern Pine (SG=0.55)	9/16"	1-3/8"
	Steel, A36	3/8"	0.050"
	Steel Stud, A653 Gr. 33	3/8"	0.0346" (20 Ga.)
	Aluminum, 6063-T5	3/8"	0.0713" (14 Ga.)
3/16" Ultracon (steel) Max. DP of 50.0 psf	P.T. Southern Pine (SG=0.55)	7/16"	1-3/8"
	Concrete (min. 2.85 ksi)	1"	1-3/8"
	UngROUTED CMU, (ASTM C-90)	2-1/2"	1-1/4"
1/4" Ultracon (steel)	P.T. Southern Pine (SG=0.55)	1"	1-3/8"
	Concrete (min. 2.85 ksi)	1"	1-3/4"
	UngROUTED CMU, (ASTM C-90)	2-1/2"	1-1/4"
1/4" Ultracon+ (steel)	P.T. Southern Pine (SG=0.55)	1"	1-3/8"
	Concrete (min. 3.00 ksi)	1"	1-3/4"
	UngROUTED CMU, (ASTM C-90)	2-1/2"	1-1/4"
1/4" Crete-Flex (410 S.S.)	P.T. Southern Pine (SG=0.55)	1"	1-3/8"
	Concrete (min. 3.35 ksi)	1"	1-3/4"
	UngROUTED CMU, (ASTM C-90)	2-1/2"	1-1/4"
1/4" Aggre-Gator (18-8 S.S.)	Concrete (min. 3.275 ksi)	1-1/2"	1-3/8"
	P.T. Southern Pine (SG=0.55)	1"	1-3/8"
	UngROUTED CMU, (ASTM C-90)	2"	1-1/4"

TABLE 3: ANCHORS INSTALLED THROUGH INTEGRAL FIN

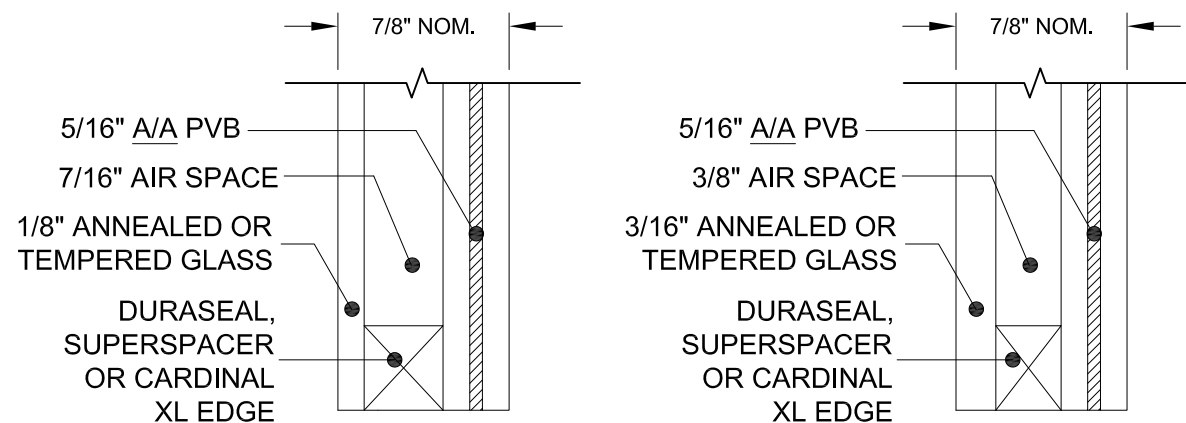
Anchor	Substrate	Min. Edge Distance	Min. Embedment
2-1/2" x .131" Common Nail Max. DP of 50 psf	P.T. Southern Pine (SG=.55)	9/16"	2-7/16"
	P.T. Southern Pine (SG=.55)	9/16"	2-7/16"
	P.T. Southern Pine (SG=.55)	9/16"	2-7/16"
#10 SMS (steel, 18-8 S.S. or 410 S.S.)	P.T. Southern Pine (SG=.55)	3/4"	1-3/8"
	Aluminum, 6063-T5	3/8"	0.050"
	Steel Stud, Gr. 33	3/8"	0.0346" (20 Ga.)
	Steel, A36	3/8"	0.050"

ANCHOR NOTES:

- 1) "UNROUTED CMU" VALUES MAY BE USED FOR GROUDED CMU APPLICATIONS.
- 2) PANHEAD, FLATHEAD OR HEXHEAD ARE ACCEPTABLE.
- 3) ANCHOR LENGTH TO BE SO THAT A MIN. OF 3 THREADS EXTEND BEYOND THE METAL SUBSTRATE.



TYP. GLAZING DETAIL



GLAZING TYPES

PVB INTERLAYER MANUFACTURED BY KURARAY AMERICA, INC.

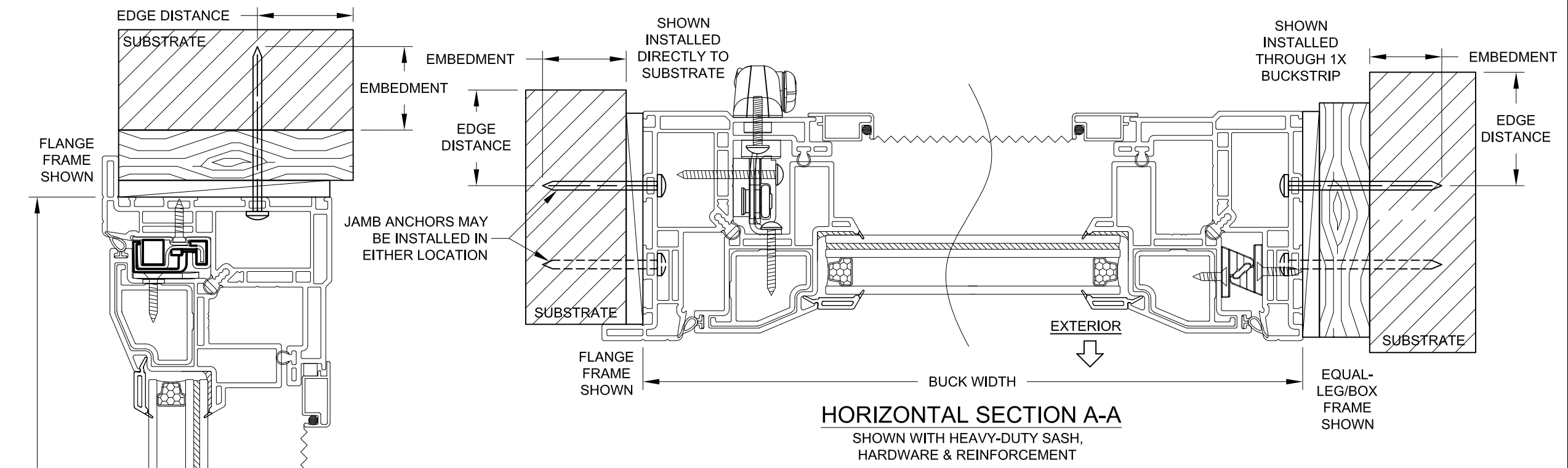
Title: VINYL CASEMENT WINDOW, LMI		Drawn By: J ROSOWSKI	
Description: GLASS/ANCHOR OPTIONS		Date: 12/13/14	
Revision:			
Series/Model: CA-5540	Scale: NTS	Sheet: 2 OF 4	Drawing No. FPA-5540CA.0
		Rev: B	

PGI

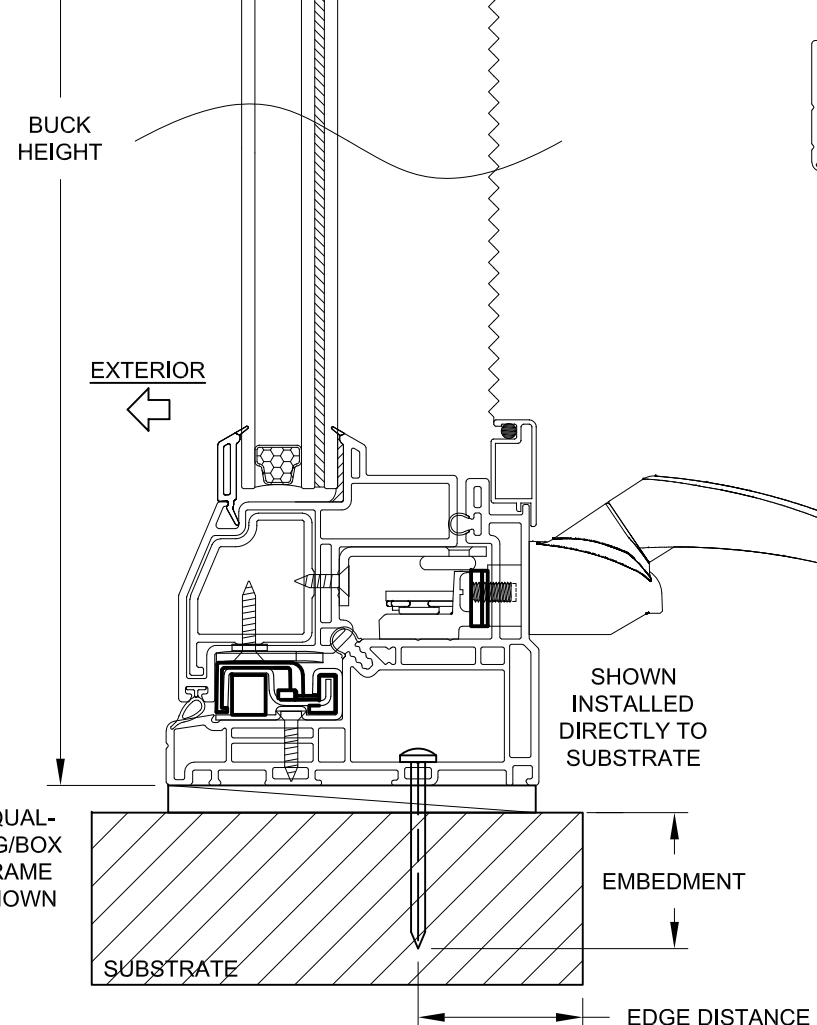
1070 TECHNOLOGY DRIVE
N. VENICE, FL 34275
(941) 480-1600

COPYRIGHT © 2021
PGI INDUSTRIES, INC., LIMITED LICENSE
TO MAKE COPIES FOR PERMITTING.
REGISTRATION #29296

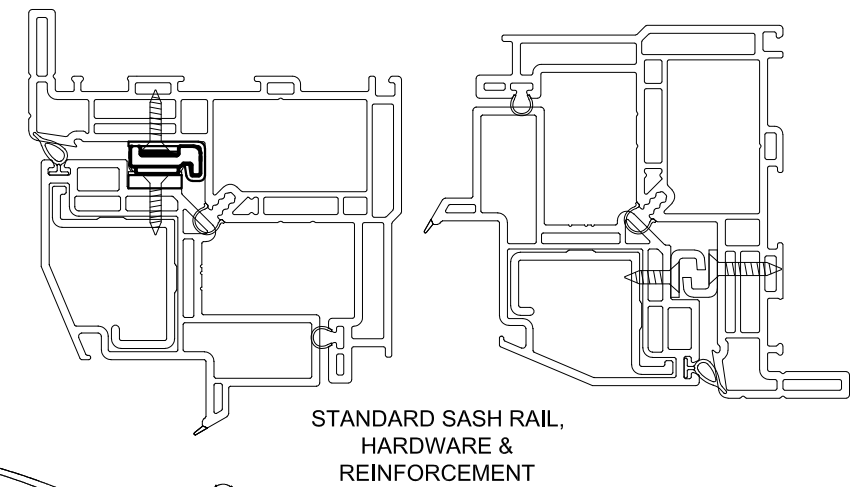
ANTHONY LYNN MILLER
LICENSE
No. 58705
6/23/21
STATE OF
FLORIDA
PROFESSIONAL ENGINEER
A. LYNN MILLER, P.E.
P.E.# 58705



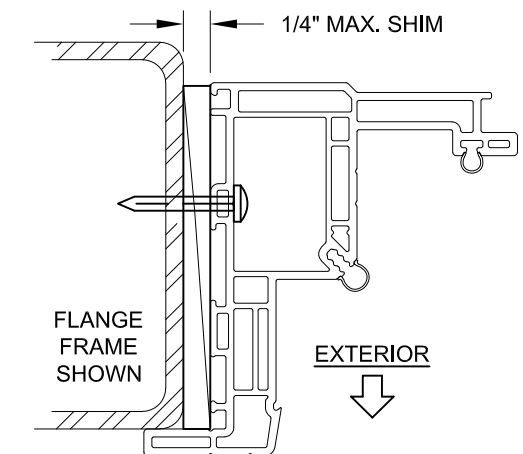
HORIZONTAL SECTION A-A
 SHOWN WITH HEAVY-DUTY SASH,
 HARDWARE & REINFORCEMENT



VERTICAL SECTION B-B
 SHOWN WITH HEAVY-DUTY SASH,
 HARDWARE & REINFORCEMENT



STANDARD SASH RAIL,
 HARDWARE &
 REINFORCEMENT



INSTALLATION THROUGH
 THE FRAME, INTO METAL

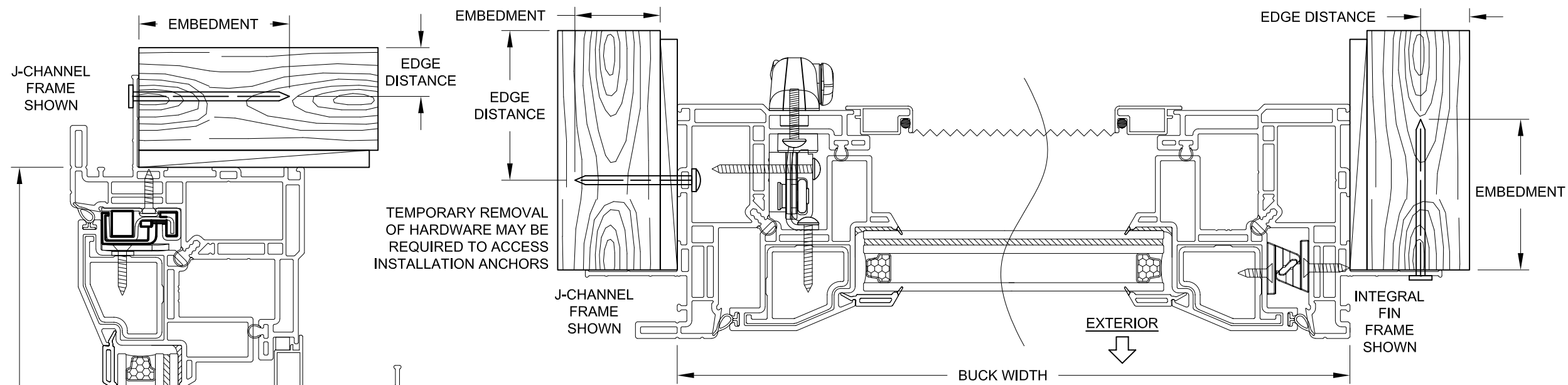
INSTALLATION NOTES:

- 1) SEE SHEET 1 FOR SPACING REQUIREMENTS.
- 2) SEE TABLE(S) ON SHEET 2 FOR ANCHORAGE AND SUBSTRATE REQUIREMENTS.
- 3) MAX. SHIM THICKNESS TO BE 1/4".
- 4) GLASS SHOWN IS FOR ILLUSTRATIVE PURPOSES ONLY AND MAY DIFFER TO MEET DESIGN REQUIREMENTS.
- 5) FIN AND/OR FLANGE MAY BE REMOVED TO CREATE OTHER FRAME TYPES.

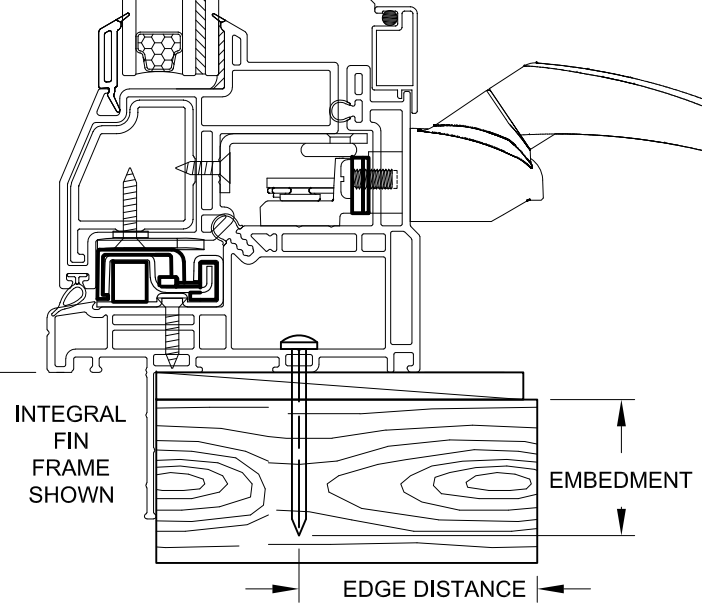
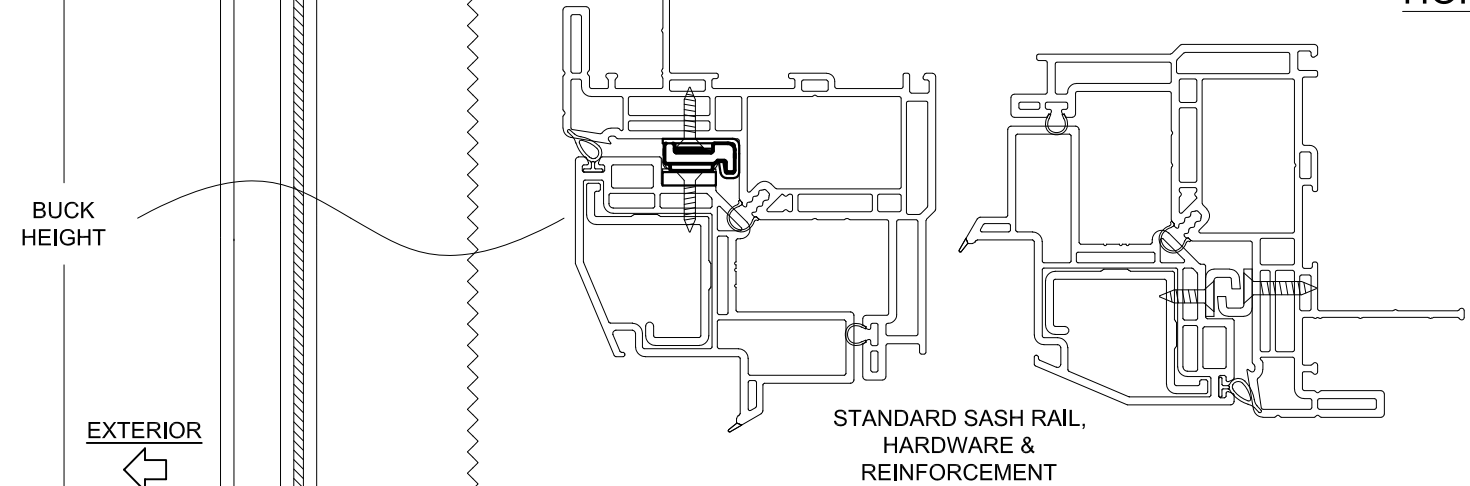
Title: VINYL CASEMENT WINDOW, LMI		Drawn By: J ROSOWSKI	
Description: FLANGE & EQUAL-LEG/BOX FRAMES		Date: 12/13/14	
Revision:			
Series/Model: CA-5540	Scale: NTS	Sheet: 3 OF 4	Drawing No. FPA-5540CA.0
		Rev: B	

PGT
 1070 TECHNOLOGY DRIVE
 N. VENICE, FL 34275
 (941) 480-1600
 COPYRIGHT © 2021
 PGT INDUSTRIES, INC., LIMITED LICENSE
 TO MAKE COPIES FOR PERMITTING.
 REGISTRATION #29296

ANTHONY LYNN MILLER
 LICENSE
 No. 58705
 6/23/21
 STATE OF
 FLORIDA
PROFESSIONAL ENGINEER
 A. LYNN MILLER, P.E.
 P.E.# 58705



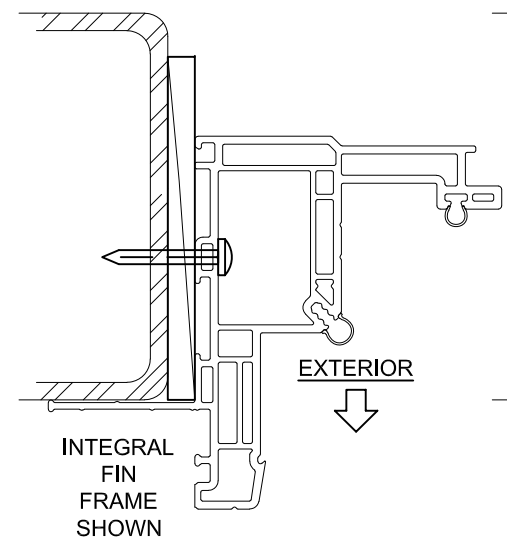
HORIZONTAL SECTION C-C
 SHOWN WITH HEAVY-DUTY SASH,
 HARDWARE & REINFORCEMENT



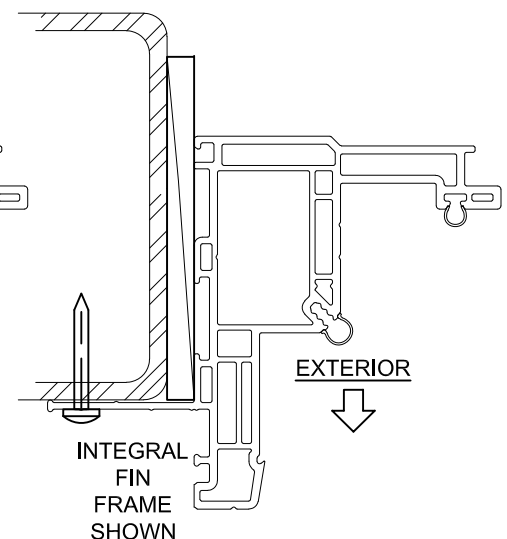
VERTICAL SECTION D-D
 SHOWN WITH HEAVY-DUTY SASH,
 HARDWARE & REINFORCEMENT

INSTALLATION NOTES:

- 1) SEE SHEET 1 FOR SPACING REQUIREMENTS.
- 2) SEE TABLE(S) ON SHEET 2 FOR ANCHORAGE AND SUBSTRATE REQUIREMENTS.
- 3) MAX. SHIM THICKNESS TO BE 1/4".
- 4) GLASS SHOWN IS FOR ILLUSTRATIVE PURPOSES ONLY AND MAY DIFFER TO MEET DESIGN REQUIREMENTS.
- 5) FIN AND/OR FLANGE MAY BE REMOVED TO CREATE OTHER FRAME TYPES.



INSTALLATION THROUGH THE FRAME, INTO METAL



INSTALLATION THROUGH THE INTEGRAL FIN, INTO METAL

Title: VINYL CASEMENT WINDOW, LMI		Drawn By: J ROSOWSKI	
Description: J-CHANNEL & INTEGRAL FIN FRAMES		Date: 12/13/14	
Revision:			
Series/Model: CA-5540	Scale: NTS	Sheet: 4 OF 4	Drawing No. FPA-5540CA.0
		Rev: B	

PGT

1070 TECHNOLOGY DRIVE
 N. VENICE, FL 34275
 (941) 480-1600

COPYRIGHT © 2021
 PGT INDUSTRIES, INC., LIMITED LICENSE
 TO MAKE COPIES FOR PERMITTING.

REGISTRATION #29296

ANTHONY LYNN MILLER
 LICENSE
 No. 58705
 6/23/21
 STATE OF
 FLORIDA
PROFESSIONAL ENGINEER

A. LYNN MILLER, P.E.
 P.E.# 58705